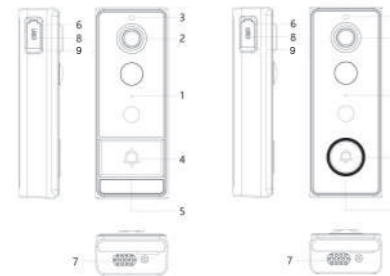




智能可视门铃 使用说明书 V1.0

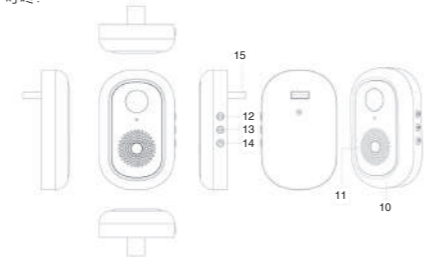
一、外观介绍:

门铃:



- ① 咪头
- ② 镜头
- ③ 光敏
- ④ 门铃键
- ⑤ 指示灯
- ⑥ 复位孔
- ⑦ 喇叭
- ⑧ 充电口
- ⑨ TF插口

叮咚:



- ⑩ 指示灯
- ⑪ 喇叭
- ⑫ 配对键
- ⑬ 音量大小
- ⑭ 音乐切换
- ⑮ USB 充电口

二、APP 下载方式:

Android 手机可在自带应用市场或应用宝搜索【Smart Life】进行下载; IOS 手机在 APP Store 中搜索【Smart Life】下载;



三、APP 注册:

- 1.如第一次下载使用,请点击“注册”;如已有账号,则直接点击“登录”
- 2.点击“注册”,阅读“隐私政策”,点击“同意”。输入合法有效的手机号码或电子邮件地址,并单击“继续”。然后输入验证码登录 APP。(“立即体验”登入不能正常添加门铃设备,请注册后登入。)
3. APP 权限弹窗提示,如弹出“消息推送、访问地理位置、连接周边设备”等权限,请设置为“允许”。

四、添加设备:

1. 打开手机自带蓝牙、定位权限功能。
2. 按门铃键开机,第一次使用时,连续按2次启动门铃工作指示灯闪烁,设备进入配网模式。
3. 打开 APP进入“首页”,点击页面右上角“+”,APP 将自动扫描发现设备,点击“添加”。



(备注: a 如未自动搜索到设备,请点击下图“打开蓝牙”,前往去设置“允许本应用的附近的设备权限”)



b.进入权限管理,开启 WLAN、蓝牙、连接附近的设备等权限,选择【始终允许】。



4. 添加门铃后,输入选择2.4GHz的WiFi网络,输入密码。然后,点击下一步。请保持路由器、手机和门铃尽可能靠近,添加成功后,点击“完成”。

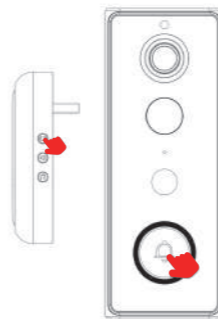
(备注: 如未连接成功,请复位设备后重新连接)



5. 将门铃充满电后,在WiFi信号覆盖的范围内且信号良好的范围内安装。

温馨提示: ① 充电时, 充电指示灯亮红灯。
② 充满电后, 充电指示灯熄灭。

五、门铃与叮咚机匹配:



1. 叮咚机 (图左) 接通电源;
2. 长按叮咚机配对键 3 秒 (如图), 指示灯闪烁;
3. 按一下门铃键 (图右), 叮咚机响铃, 即匹配成功。

六、手机信息推送

进入手机-设置-通知与状态栏-应用通知管理, 打开涂鸦智能 APP 通知权限, 开启允许通知、悬浮、锁屏、声音提醒等通知功能。

(备注: 因各手机型号不同, 操作界面、选项等存在差异, 请自主选择)



七、功能介绍:

- 1.视频通话: 当访客按响门铃时, 手机APP会收到提醒通知, 点击推送弹窗进入视频, 长按“👁️”可以进行对讲。
- 2.PIR移动侦测: 当检测到移动物体时, 侦测信息将发送到您的手机APP。
- 3.APP远程监控: 当你想观察室外情况时, 可通过手机APP远程查看门口状况。
- 4.消息中心: 访客呼叫及PIR移动侦测抓拍的视频都会存在APP云端, 用户可通过消息中心查看最新视频。
- 5.设备共享: 进入APP实时界面, 点击右上角设置-共享设备-添加共享-输入账号。(备注: 共享成员需先下载并注册“Tuya Smart”APP)
- 6.夜视: 自带光敏感应器, 黑暗环境自动开启LED补光灯。
- 7.低电量提醒: 当电池电量比较低时, APP会推送低电量提醒, 请及时充电。
- 8.工作指示灯: 工作状态: 蓝色指示灯常亮
配网状态: 蓝色指示灯闪烁
充电状态: 红色指示灯常亮, 充满熄灭。

9.TF卡存储功能: 在设备开机前, 插入TF卡(最大支持128G); 请用C10或U3等级的高速内存卡。

- ①进入设置-录像设置-录像开关打开;
- ②进入存储设置, 进行TF卡格式化, 提示格式化成功后, 即可完成设置和使用了。即所有来访呼叫、移动侦测的视频都会存储在TF卡内, 您可以通过设备监控界面-回放、拉动进度条查看最新的视频。
- 10.休眠待机: 长按门铃3-5秒, 可以让门铃再次进入休眠待机状态。

八、设备在线升级:

进入设备监控界面, 依次点击设置-设备升级-更新-开始更新, 最终显示已是最新版本即升级完成。此设备为低功耗产品, 请将设备唤醒, 视频流正常显示后进行升级。升级过程中保持设备电源始终处于连接状态, 且网络较好范围内升级; 如遇升级异常或升级失败, 请耐心等待设备自动重启后, 再次升级。



九、常见问题:

- 1.使用前应注意什么?
R: 在使用之前, 请仔细阅读我们的用户手册, 按详细步骤操作。当与门铃通话时, 请将手机放置在距门铃至少5m的距离, 这样不会造成信号干扰或噪音。
- 2.门铃什么时候需要重启, 以及如何重启?
R: 当门铃无法正常工作或无法连接到手机时, 需要将其重启复位, 按住“Reset”按键, 听到“嘀”提示音, 进行重启复位, 重新添加设备。
- 3.重复添加设备失败怎么办?
R: 首次添加失败后, 请重启门铃, 长按“Reset”按键, 听到“嘀”提示音, 然后再次尝试添加。设备仅支持2.4GHZ WIFI网络, 请确保您使用的是2.4GHZ WIFI网络并输入正确的wifi密码。
- 4.门铃视频无法正确预览观看?
R: 检查网络是否良好, 并将门铃靠近路由器。如果仍然无法使用, 请重启门铃并重新添加。
- 5.如何将门铃网络更改为其他路由器?
R: 先在APP上删除设备, 然后为门铃重新配置网络。
- 6.为什么我无法通过手机APP接收推送消息通知?
R: 请确保APP在手机上正常运行, 并且手机系统已打开相关的推送功能如短信通知和权限确认。
- 7.门铃为什么按第一次不会响铃?
R: 门铃在运输过程中, 会进入深度休眠, 第一次按门铃键使门铃开机, 再次按即可正常响铃及使用。
- 8.设备安装位置?
R: 请勿在金属门上安装门铃, 以免金属门屏蔽wifi信号。门铃安装时, 请按照用户手册完成操作, 测试门铃正常工作后, 将门铃安装在信号最佳位置。

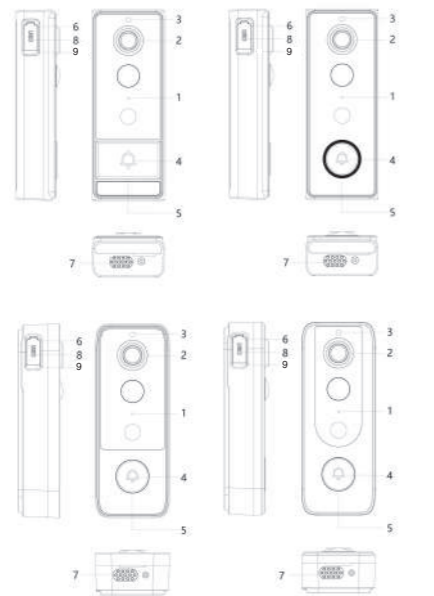
使用前请仔细阅读, 并妥善保管以备后续参考



Smart Visual Doorbell Instruction manual V1.0

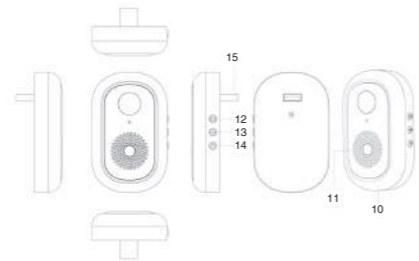
I. Appearance introduction:

Doorbell:



- ① Mic ② Lens ③ Light sensitive ④ Doorbell key ⑤ Indicator light
- ⑥ Reset ⑦ Speaker ⑧ Charging port ⑨ TF card socket

Ding dong:



- ⑩ Indicator light ⑪ Speaker ⑫ Pairing key ⑬ Volume size
- ⑭ Music toggle ⑮ USB Charging Port

II. Download mode of APP:

For Android phones, it can be downloaded from its own app market or App Treasure Search [Smart Life].For IOS phones, search for " Smart Life " in the APP Store to download.



III. APP registration:

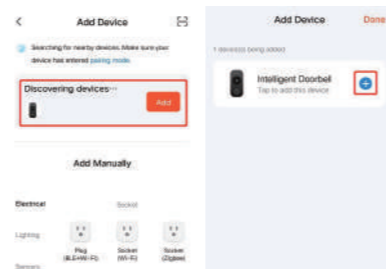
1. For the first download and use, please click "Register".If you have an account, click "Login".
2. Click "Register", read "Privacy Policy", and click "Agree".Enter a valid mobile

phone number or email address and click Continue.Then enter the verification code to log in to the APP("Try Now" login can not add doorbell devices normally, please register and log in.)

3.APP permissions pop-up prompts, such as message push, access geographical location, connect peripheral devices, etc., please set to "Allow".

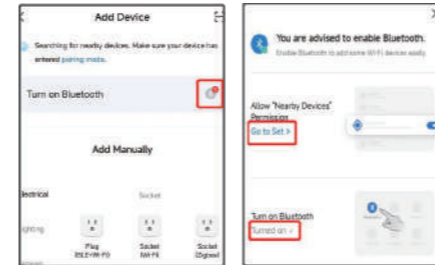
IV. Adding a device:

1. Turn on the bluetooth and location permission functions of the mobile phone.
2. Press the doorbell button to turn on the device. When using it for the first time, press the doorbell button twice in a row to start the device. The working indicator light will flash, and the device will enter the distribution network mode.
3. Open the APP, enter the "Home page", click "+" on the upper right corner of the page, the APP will automatically scan and discover the device, click "Add".

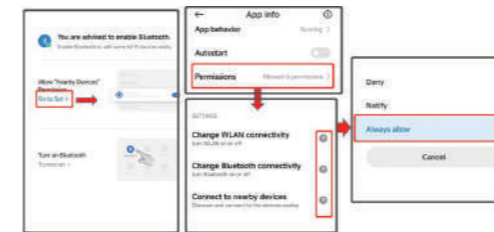


Note:

- a. If the device is not automatically searched, please click "Turn on Bluetooth" in the picture below and set "Allow device permissions near this application".

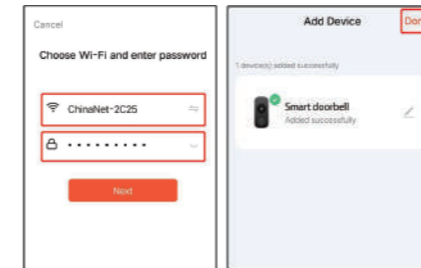


- b. Access permission management, enable WLAN, Bluetooth, and nearby devices, and select Always Allow.



4. After adding the doorbell, select the 2.4GHz WiFi network and enter the password. Then, click on 'Next'. Please keep the router, phone, and doorbell as close as possible. After successful addition, click 'Finish'.

(Note: If the connection is not successful, please reset the device and reconnect)



5. After fully charging the doorbell, install it within the range of WiFi signal coverage and good signal.
Kind Reminder:
① When charging, the charging indicator light is red.
② After being fully charged, the charging indicator light goes out.

V. Doorbell and ding Dong matching:



1. Power on the ding Dong machine (left);
2. Long press the pairing button of ding Dong machine for 3 seconds (as shown in the picture), and the indicator blinks.
3. Press the doorbell button (right), ding Dong machine rings, that is, the match is successful.

VI. Mobile message push

Enter mobile phone - Settings - notification and status bar - Application notification management, open TUYA Smart APP notification permission, enable notification, suspension, lock screen, sound reminder and other notification functions.

(Note: Due to different mobile phone models, the operation interface and options are different, please choose independently)



VII. Function Introduction:

1. Video call: When a visitor rings the doorbell, the mobile app will receive a reminder notification and click on the push pop-up to enter the video, long press "Can conduct intercom."
2. PIR motion detection: When a moving object is detected, the detection information will be sent to your mobile app.
3. APP remote monitoring: When you want to observe the outdoor situation, you can remotely check the situation at the door through the mobile APP.
4. Message Center: Videos captured by visitor calls and PIR motion detection will be stored in the app cloud, and users can view the latest videos through the message center.
5. Device sharing: Enter the real-time interface of the APP, click on Settings - Share Device - Add Share - Enter Account in the upper right corner.
(Note: Shared members need to download and register the "Tuya Smart" app first)
6. Night vision: Equipped with a photosensitive sensor, the LED fill light automatically turns on in dark environments.
7. Low battery reminder: When the battery level is low, the app will push a low battery reminder, please charge it in a timely manner.
8. Work indicator light: Work status: Blue indicator light is always on
Distribution network status: Blue indicator light flashing
Charging status: The red indicator light is always on, fully charged and turned off.
9. TF card storage function: Before turning on the device, insert a TF card (supporting up to 128GB); please use a C10 or U3 level high-speed memory card.
① Go to Settings - Recording Settings - Turn on the recording switch;
② Enter the storage settings and format the TF card. Once the formatting is successful, you can complete the setup and use. All incoming calls and motion detection videos will be stored in the TF card, and you can view the latest videos by clicking on the device monitoring interface - replay and pulling the progress bar.
10. Sleep standby: Long press the doorbell for 3-5 seconds to put it back into sleep standby mode.

VIII. Equipment online upgrade:

Enter the device monitoring interface, click Settings - Device Upgrade - Update - Start Update, and the latest version will be displayed, indicating that the upgrade is complete. This device is a low-power product. Please wake up the device and upgrade it after the video stream is displayed normally. During the upgrade process, keep the device power always connected and upgrade within a good network range; If there is an upgrade exception or upgrade failure, please be patient and wait for the device to automatically restart before upgrading again.



IX. Common problems:

What should be noted before use?

R: Before use, please carefully read our user manual and follow the detailed steps.

When talking to the doorbell, please place your phone at least 5m away from the doorbell to avoid signal interference or noise.

When does the doorbell need to be restarted and how to reset it?

R: When the doorbell cannot work properly or cannot connect to the phone, it needs to be restarted and reset. Press and hold the "Reset" button, hear a "beep" prompt sound, restart and reset, and then add the device again.

What should I do if the repeated addition of devices fails?

R: After the first failed addition, please restart the doorbell, long press the "Reset" button, hear a "beep" prompt sound, and then try adding again. The device only supports 2.4GHz WIFI network. Please ensure that you are using a 2.4GHz WIFI network and enter the correct WIFI password.

Note: 5G networks are not currently supported, and all routers will have a 2.4GHz network option.

4. Can't preview and watch the doorbell video correctly?

R: Check if the network is functioning properly and bring the doorbell closer to the router. If it still cannot be used, please restart the doorbell and add it again.

5. How to change the doorbell network to another router?

R: First, delete the device on the app, and then reconfigure the network for the doorbell.

6. Why am I unable to receive push message notifications through my mobile app?

R: Please ensure that the app is running properly on your phone and that the phone system has enabled relevant push functions such as SMS notifications and permission confirmation.

7. Why doesn't the doorbell ring the first time it rings?

R: During transportation, the doorbell will enter a deep sleep mode. Pressing the doorbell button for the first time will turn on the doorbell, and pressing it again will ring and use it normally.

8. Equipment installation location?

R: Do not install doorbells on metal doors to prevent them from blocking WiFi signals. When installing the doorbell, please follow the user manual to complete the operation. After testing that the doorbell is working properly, install it in the best signal position.